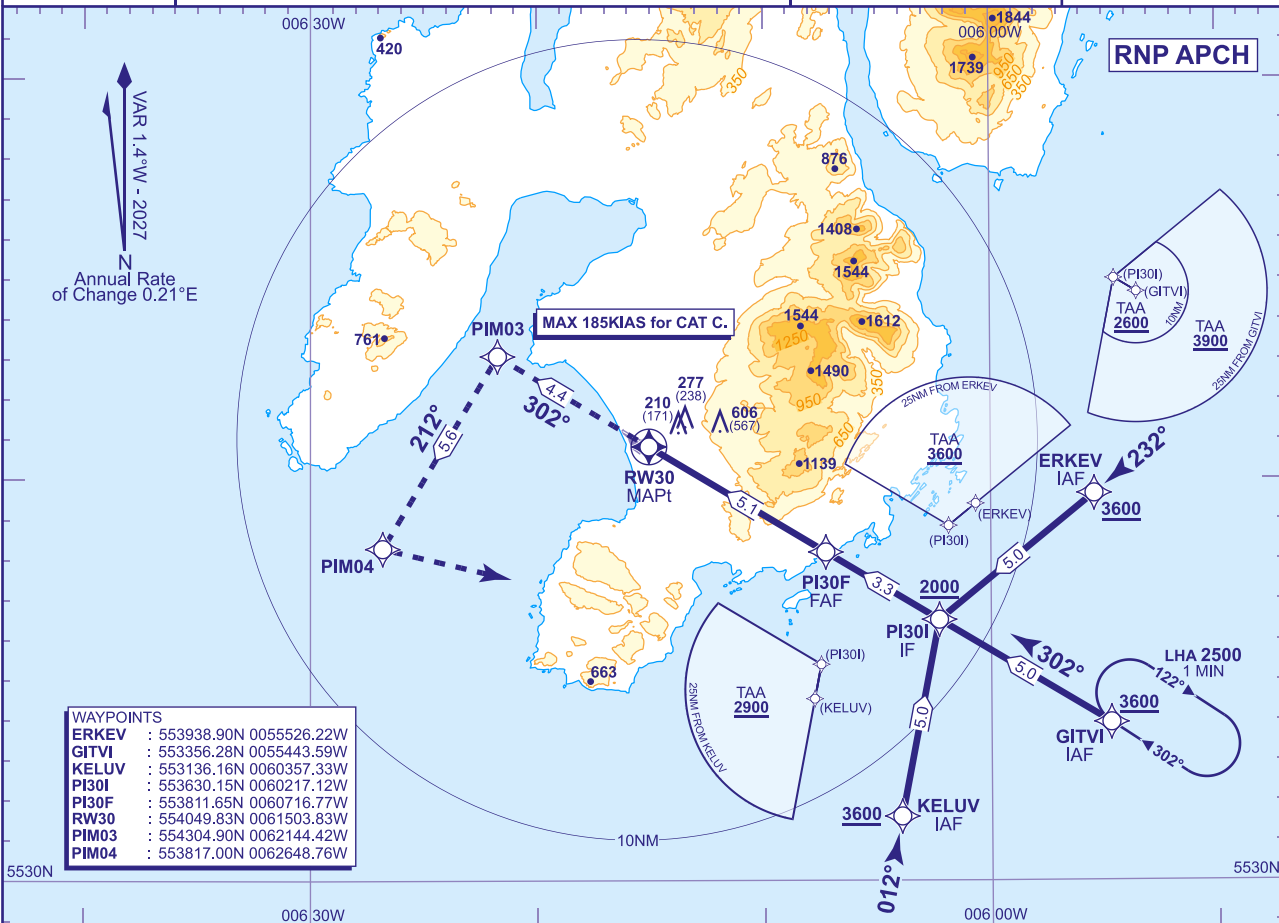


(ACFT CAT A,B,C)



RECOMMENDED PROFILE Gradient 6.12%, 372FT/NM					
NM to RW30	5	4	3	2	1
ALT(HGT)	1950(1911)	1580(1541)	1200(1161)	830(791)	460(421)



Aircraft Category		A	B	C	Rate of descent	G/S KT	160	140	120	100	80
OCA (OCH)	LNAV	1000(961)	1000(961)	1000(961)		FT/MIN	990	870	740	620	500
VM(C)OCA (OCH AAL)	Total Area	1020(964)	1040(984)	1830(1774)							
	150°M clockwise to 035°M	1020(964)	1020(964)	1020(964)							

NOTE

- 1 Use of this procedure is strictly PPR from the aerodrome operator.
- 2 Prior to commencing the procedure, pilots are to broadcast on AFIS 123.155 with flight details and intentions.
- 3 ATC will normally require aircraft to hold not lower than **3600**.

AD 2-EGPI-8-2